

PCE Press

The Quarterly Newsletter of the
Partnership for
Children of Essex
A Pathway for Hope

Fall 2007

PCE/FSO BACK TO SCHOOL GROOVE

Going back to school marks the end of summer and the beginning of the fall and winter months. The Partnership for Children of Essex and the Family Support Organization of Essex County teamed up to sponsor a Back to School Groove. The event was held at the Branch Brook Park Skating Rink and the concept was that parents and their children could "skate" their way into a successful school year.

JERSEY GARDENS MALL BRINGS "MAGIC" TO PCE

PCE is proud to participate in Jersey Gardens Mall Magical Day of Giving 2007. The event will take place on Thursday, November 8, 2007 and will consist of family entertainment, door prizes, raffle drawings and amazing savings in most of their retail stores for all ticket holders. The best part of it all is that **PCE receives 100% of the proceeds from our agency's ticket sales that will directly benefit PCE children for the holidays.** So, come out and purchase a ticket for \$5 in the name of PCE and start your holiday shopping early!

INSIDE THIS ISSUE:

Cover:

- *Back to School
- *Jersey Gardens
- *A Farewell to Friends
- *Silent Elves

In Your Neighborhood 2

Provider Corner 2

Do children really live what they learn? 2

The HOPE of PCE 3

PCE Day of Wellness 3

In the world of PCE 3

How to Make a Referral 4

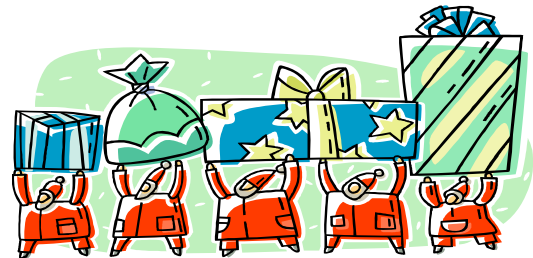
Contacts at PCE 4

A FAIRWELL TO FRIENDS

On behalf of the entire staff and the Board of Trustees of PCE, we would like to send our best wishes to Ms. Merian Oliver and Ms. Mary Conyers. Both were founding Board Members and Ms. Oliver was the inaugural Board Chairperson. Both have been valuable assets to PCE by providing leadership and guidance for the organization. We truly thank you and wish you well!



CALLING ALL SILENT ELVES...



As the holidays approach, PCE is looking for ways to put smiles on faces less fortunate than ourselves. We will be accepting donations of any kind to assist us in planning a Holiday Event for the children and families of PCE. Some ideas of donations include: catered food items, gift cards to clothing/music stores, music CD's, watches, CD players, family games and toys. We will also accept monetary donations of any amount. If you would like to be a "silent elf" and partner with us on this venture, please contact the Director of Community Resource Development, Erika Williams at (973) 323-3000 ext 109.

No gift is too small...

IN YOUR NEIGHBORHOOD

Here are some upcoming events/happenings in your neighborhood...

Essex County Mobile Van

50 Union Avenue-Irvington

Wednesday, October 24, 2007

10:00am-2:00pm

Apply for: Food Stamps, Medicaid, NJ FamilyCare, TANF and more...

More info? Call (973) 372-4353

Violence Against Women

Community Awareness Day

Paradise Baptist Church

348-352 15th Ave., Newark, NJ

Saturday, October 27, 2007

9:00am-12:00pm

Family Support Organization of Essex County

*Weekly Parenting Workshops

60 Evergreen Place-East Orange

More info? Call (973) 395-1441

Or visit www.fsoec.org

City Wide Halloween Festival

John F. Kennedy Recreation Center-Newark

Wednesday, October 31, 2007

3:30pm-8:00pm

More info? Call (973) 733-6454

DO CHILDREN REALLY LIVE WHAT THEY LEARN?

For the past 2 years, PCE has been a host agency for the MOET Summer Youth Employment Program. We believe in building leaders of the future by exposing youth to a glimpse of the working world. One youth reported that her work experience at PCE "is giving her a positive, clear mind to achieve her goals." Another stated that "Having a job is making her feel more responsible."

These youth are not only learning valuable skills but are also interfacing with professionals in the field of social work that are ultimately serving as role models. One final comment from one of the youth was that "having a summer job as a teenager is a great way to start a successful life."

So the answer is YES. These youth are learning strong morals and work ethics that can be applied to everyday situations. PCE is proud to provide this unique experience for our youth and will continue to do so!

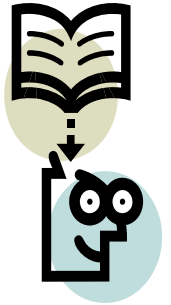


PROVIDER CORNER

The Koi Academy

The Koi Academy was founded by an ambitious, young man by the name of Mr. Corey T. Wilson. The Koi Academy offers Behavioral Modification Services to students suffering from ADHD, ADD, learning disabilities, brain injuries, developmental delays and psychiatric disorders. Services include but are not limited to:

- *Cognitive Training
- *Academic Tutoring
- *IQ Testing
- *Neuropsychological Training



This program helps students reduce the frequency of self defeating behaviors, increase self esteem and confidence and encourage self-advocacy and assertive interaction.

If you are interested in more information about this unique program, please contact Mr. Wilson directly at (973) 704-1200.

The Hope of PCE

It is our pleasure to introduce to you...Miss Allison Julien! When Allison was referred to PCE, she was actually missing! She had a history of running away and being resistant to service providers that were trying to help her. Allison and her family had been through a lot in recent years, including the



"Allison has come a very long way"

-Lisa Sousa-Senior Care Manager

loss of her mother.

Allison had to accept the fact that her sister was now her primary caregiver and that rules needed to be enforced. Since her involvement with PCE and her Senior Care Manager, Lisa Sousa, Allison has been able to return to night school to make up for the classes that she missed while she was running away.

She is not only in the process of completing her freshman year classes but is also taking her sophomore classes at the same time to be on target as a junior next year. Her Senior Care Manager is extremely proud of her accomplishments as Allison has come a long way. She has met over 90% of her Family Vision as stated on her Individual Service Plan and that is truly something to be happy about.

Keep up the great work Allison!!!

PCE DAY OF WELLNESS

PCE will take the opportunity to offer families a "Day of Wellness" on Saturday, November 10th, 2007. Although wellness in general should be practiced daily, we want to share with parents a way to 'jump start' the process. Wellness Consultant, Tamera Mingo will be on hand to teach families how to take care of and maintain their bodies from the inside-out. Participants will be



provided with valuable tools to assist them with their daily diets, meditation and general overall health. Healthy snacks will be provided.

If you are interested in attending this event, please contact Ms. Crystal Bligen, Administrative Assistant/Family Liaison at (973) 323-3000 ext. 110.

LET YOUR PATHWAY
TO OPTIMAL HEALTH
START TODAY!

IN THE WORLD OF PCE

PCE would like to highlight the events and happenings that give us something to celebrate!

***New Senior Care Manager and Staff Stand out of the Year-** Robert Smith

***Baby on the Way-** Congratulations to the following Care Managers: Lashaunna Love, Ron Green and Dorian DeMorizi and to Care Manager Supervisor, Vanessa Matos.

***Congratulations** to Ms. Lisa Sousa who is now officially Mrs. Lisa Alvarez following her marriage that took place on 9/22/07.



PCE INTRODUCES...

Care Manager Supervisor:

Esther Rosario

Care Managers:

Jennifer Stenson

Monique Wilson

Sasha Abrahams

Nancy Ward

Administrative Assistant:

Jeannette Guzman

Facilities Management Assistants:

Carlton Brown

Musheer Brown

**Partnership for
Children of Essex**

**571 Central Avenue
Newark, NJ 07107**

**Phone: (973) 323-3000
Fax: (973) 323-3015
Email: info@pcenj.org**



PCE REFERRALS

For more information about PCE,
call us at:

973-323-3000

To make a referral, call:

877-652-7624

Visit us on the web at:

www.pcenj.org

PCE MANAGEMENT CONTACT

Jeffrey Guenzel, LPC

Executive Director
jguenzel@pcenj.org

Victor Alvarez, LCSW

Clinical Director
valvarez@pcenj.org

Tahira West, MBA

Director of Finance
twest@pcenj.org

Jim Moschella

Quality Assurance & MIS Director
jmoschella@pcenj.org

Erika Williams

Director of Community Resource Development
ewilliams@pcenj.org